

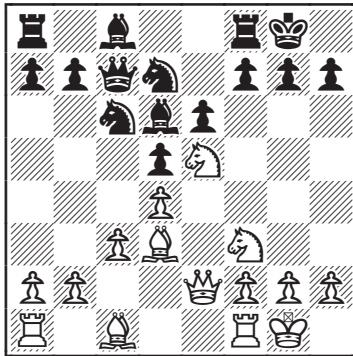
Game Continuation

In the actual game, White played Rfc1 and went on to dominate the board, taking advantage of Black's misplaced major pieces after Nxc6. He won on move 35.

Exercise 14

(Karafiat – Vogeltanz, 1998)

**1.Nf3 e6 2.d4 d5 3.e3 Nf6 4.Bd3 c5 5.c3
Be7 6.Nbd2 0-0 7.0-0 Nc6 8.Qe2 cxd4
9.exd4 Qc7 10.Ne5 Bd6 11.Ndf3 Nd7**



Is Black Safe? **No.**

Commentary

White's Bishop can reach f4 and g5, so the *Knight Assassination Attack* works well. Since White has the extra aid of already castling, it is unsurprising that the attack leads to a clear advantage for White. Compare this with *Bucher – Barbueda* in the lesson where White had not castled yet.

Analysis, Variations, and Notes

**12.Bxh7+ Kxh7 13.Ng5+ Kg8 14.Nxd7
Qxd7 15.Qh5 Re8**

15...Rd8 16.Qh7+ Kf8 17.Qh8+ Ke7
18.Qxg7 Qe8 19.Nh7 with Bg5 and (probably) Re1 soon.

**16.Qh7+ Kf8 17.Qh8+ Ke7 18.Qxg7
Kd8 19.Nxf7+ Kc7 20.Nxd6 Re7**

20...Kxd6 21.Bf4+ e5 22.dxe5+ Rxe5
(22...Nxe5 23.Qf6+) 23.Qf6+ Qe6 24.Qf8+
**21.Nb5+ Kb6 22.Qf8 Kxb5 23.Bg5 Rg7
24.Qc5+ Ka6 25.b4 b5 26.a4 [1-0]**

Game Continuation

In the actual game, Black declined the sacrifice and resigned soon thereafter.

Exercise 15

(Iordachescu – Wohl, 2002)

**1.e4 Nf6 2.e5 Nd5 3.d4 d6 4.Nf3 dxe5
5.Nxe5 c6 6.Bc4 Nd7 7.Nf3 e6 8.0-0
b5 9.Bd3 Bb7 10.a4 a6 11.Re1 Be7
12.Nbd2 Qb6 13.c4 bxc4 14.Nxc4 Qc7
15.Bg5 c5 16.Rc1 0-0 17.Bxe7 Nxe7
18.Nce5 Rad8**