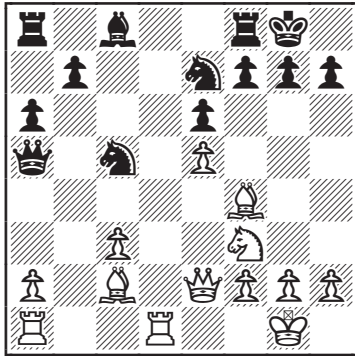


### Exercise 52

(Arsovic – Weteschnik, 1996)

1.Nf3 d5 2.c4 dxc4 3.e3 c5 4.Bxc4 e6  
5.0-0 Nf6 6.Qe2 a6 7.Bb3 Be7 8.d4  
0-0 9.dxc5 Bxc5 10.e4 Nc6 11.e5 Nd7  
12.Nc3 Bd4 13.Rd1 Bxc3 14.bxc3 Qa5  
15.Bf4 Nc5 16.Bc2 Ne7



Verdict: **17.Bxh7+!**

#### Commentary

This is a textbook example of the problems in the ...Kg6 line when Black's major pieces are not connected on the back row. He simply has no good way to meet Qg4-h4 unless he can take on e5 or defend h7 somehow.

It also shows the thematic use of Bg5 whenever Black's only hope in the ...Kg8 variation is an eventual Ng8 play to block a check from a Queen on h8.

#### Analysis, Variations, and Notes

**17...Kxh7 18.Ng5+ Kg6**

18...Kg8 19.Qh5 Rd8 20.Qh7+ Kf8  
21.Qh8+ Ng8 22.Nh7+ Ke7 23.Bg5+  
**19.Qg4 f5 20.Qh4**

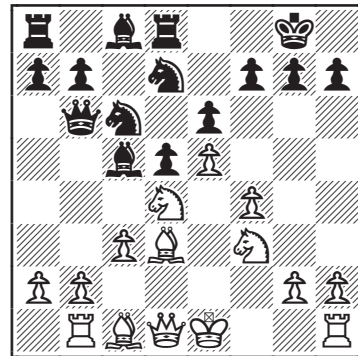
#### Game Continuation

**17.Bxh7+ Kxh7 18.Ng5+ Kg6 19.Qg4 f5  
20.Qh4 [1-0]**

### Exercise 53

(Contessotto – Giuliano, 2001)

1.e4 e6 2.d4 d5 3.Nc3 Nf6 4.e5 Nfd7 5.f4  
c5 6.Nf3 Nc6 7.Ne2 cxd4 8.Nexd4 Qb6  
9.c3 Bc5 10.Rb1 0-0 11.Bd3 Rd8



Verdict: **12.Bxh7+?!**

#### Commentary

Whether this is a desirable sacrifice or not depends on your aims. If you are happy with a draw, the sacrifice is good since you can get your material back in the ...Kg6 line and the ...Kg8 looks like a forced draw.

In this game, White had good